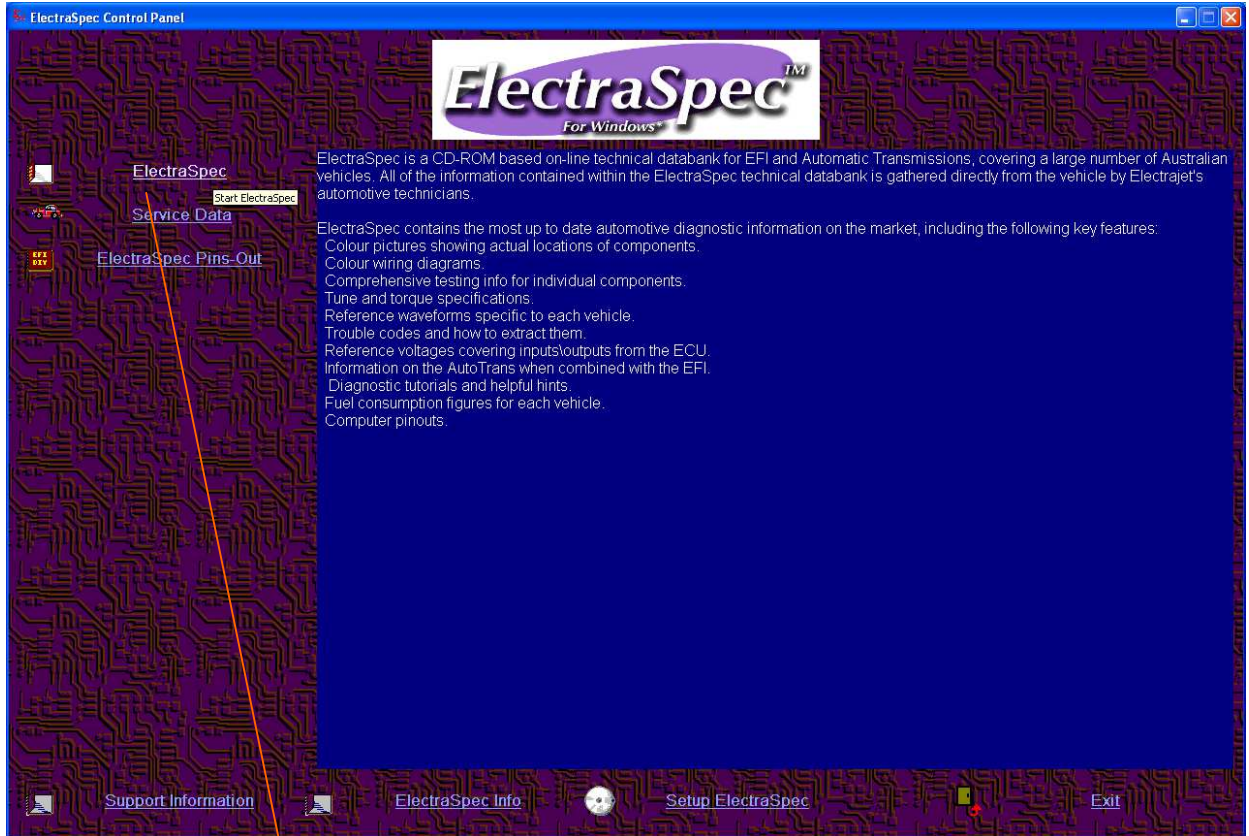


## How to Print License Form

After ElectraSpec installation, restart the computer then start ElectraSpec control panel from the shortcut created by the installation. The control panel will be shown as below:



One click on the ElectraSpec button

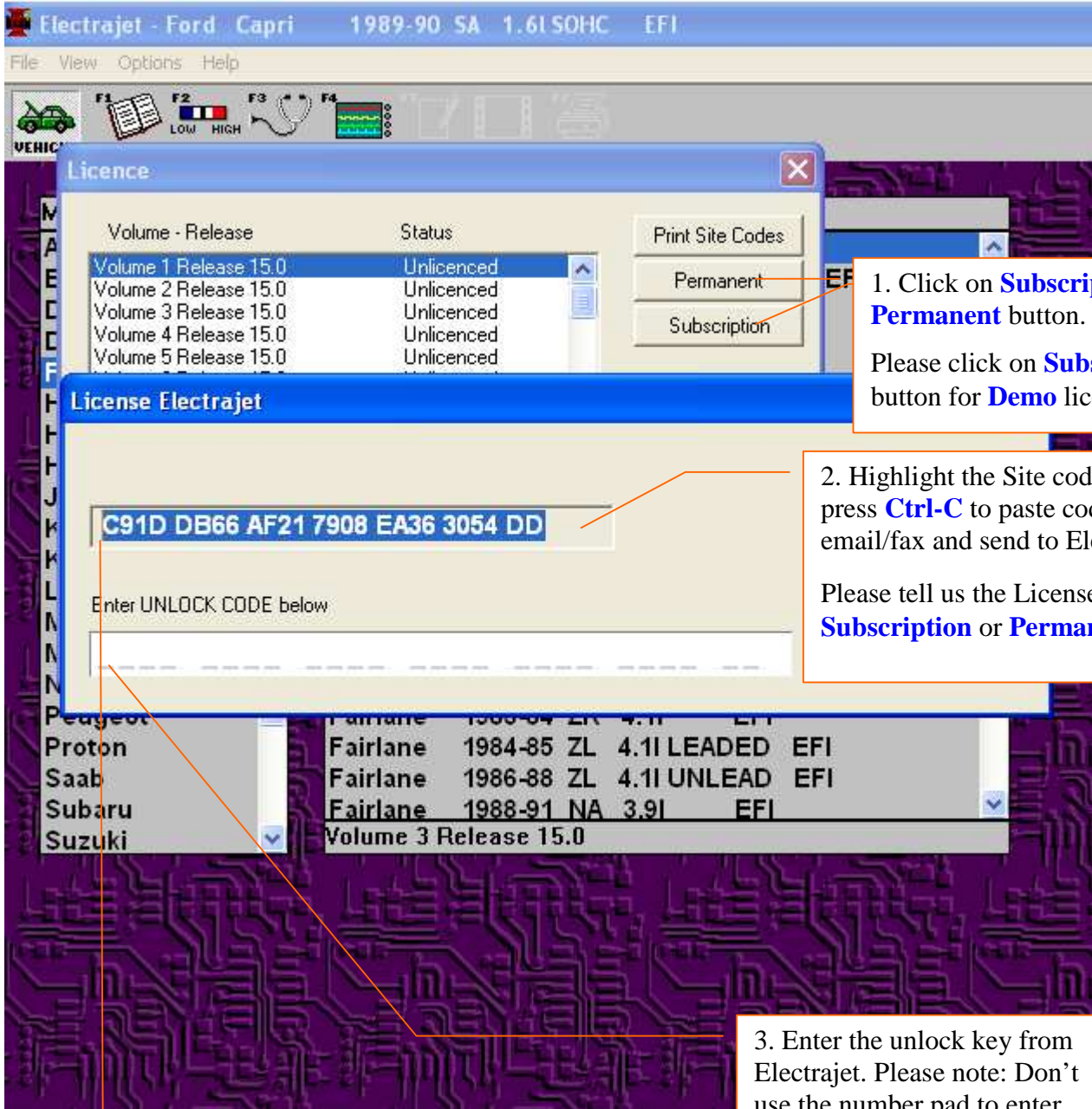
Click File then select licensing

The screenshot shows the ElectraSpec software interface. The title bar reads "ElectraSpec - Ford Capri 1989-90 SA 1.6I SOHC EFI". The menu bar includes "File", "View", "Options", and "Help". Below the menu bar is a toolbar with icons for "VEHICLE", "LIBRARY", "RANGES", "TESTS", and "WWEFORM". The main window displays a list of vehicle models. The "Manufacturer" column is on the left, and the "Model" column is on the right. The "Ford" manufacturer is selected, and the "Capri 1989-90 SA 1.6I SOHC EFI" model is highlighted. The background of the main window is a purple circuit board pattern. In the bottom right corner, there is a logo for "ELECTRAJET" with a red triangle above and below it.

Manufacturer	Model
Alfa Romeo	Capri 1989-90 SA 1.6I SOHC EFI
BMW	Capri 1989-92 SA 1.6I DOHC Turbo EFI
Daewoo	Corsair 1989-92 UA 2.0I CA20E EFI
Daihatsu	Corsair 1989-92 UA 2.4I KA24E EFI
<b>Ford</b>	Courier 1992-95 PC 2.6I EFI
Holden	Courier 1996-98 PD 2.6I Auto EFI
Honda	Courier 1996-98 PD 2.6I Manual EFI
Hyundai	Courier 2002-06 PG 2.6I Man EFI
Jaguar	Explorer 1996-99 UP 4.0I Man EFI
Kawasaki	Explorer(Early)1996-97 UN 4.0I SOHC EFI/TRANS
Kia	Explorer(Late) 1996-99 UP 4.0I SOHC EFI/TRANS
Land Rover	F Series 1987-90 5.0I Grplnj EFI
Mazda	F Series 1987-90 5.0I Simlnj EFI
Mitsubishi	F Series 1990-93 5.8I Grplnj EFI
Nissan	F Series 1990-93 5.8I Simlnj EFI
Peugeot	Fairlane 1983-84 ZK 4.1I EFI
Proton	Fairlane 1984-85 ZL 4.1I LEADED EFI
Saab	Fairlane 1986-88 ZL 4.1I UNLEAD EFI
Subaru	Fairlane 1988-91 NA 3.9I EFI
Suzuki	

Volume 3 Release 15.0 - H002

**ELECTRAJET**



1. Click on **Subscription or Permanent** button.  
Please click on **Subscription** button for **Demo** license

2. Highlight the Site codes and press **Ctrl-C** to paste codes in your email/fax and send to Electrajets.  
Please tell us the License Type: i.e. **Subscription** or **Permanent**

3. Enter the unlock key from Electrajets. Please note: Don't use the number pad to enter numbers. Using number keys on main keyboard.

Codes shown on your computer might be different from the ones shown here.