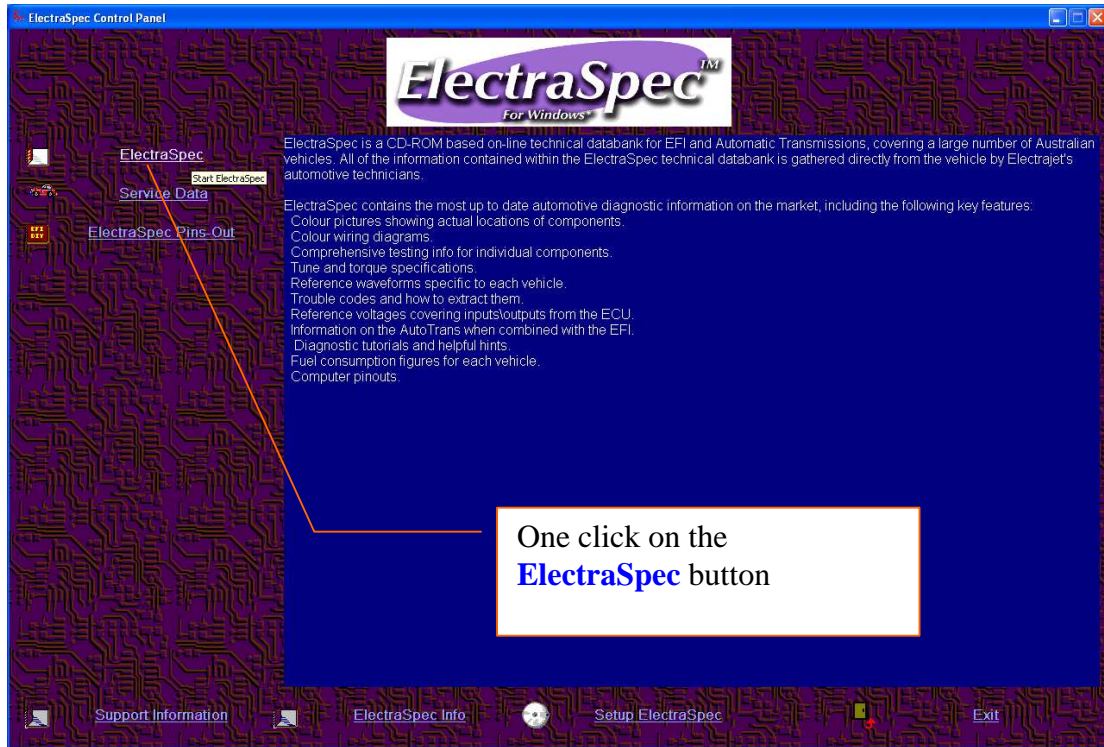


How to Print License Form for ElectraSpec

Start ElectraSpec control panel from the shortcut created by the installation. The control panel will be shown as below:



Click **File** then select **Licensing**

The screenshot shows the 'Electrajet - Ford Capri 1989-90 SA 1.6I SOHC EFI' window. The 'File' menu is open, with 'Licensing...' selected. The main window displays a list of vehicle models with the following columns: Model, Year, Body Style, Engine, and Fuel System.

Model	Year	Body Style	Engine	Fuel System
Capri	1989-92	SA	1.6I DOHC Turbo	EFI
Corsair	1989-92	UA	2.0I CA20E	EFI
Corsair	1989-92	UA	2.4I KA24E	EFI
Courier	1992-95	PC	2.6I	EFI
Courier	1996-98	PD	2.6I Auto	EFI
Courier	1996-98	PD	2.6I Manual	EFI
Courier	2002-06	PG	2.6I Man	EFI
Explorer	1996-99	UP	4.0I Man	EFI
Explorer(Early)	1996-97	UN	4.0I SOHC	EFI/TRANS
Explorer(Late)	1996-99	UP	4.0I SOHC	EFI/TRANS
F Series	1987-90		5.0I Grplnj	EFI
F Series	1987-90		5.0I Simlnj	EFI
F Series	1990-93		5.8I Grplnj	EFI
F Series	1990-93		5.8I Simlnj	EFI
Fairlane	1983-84	ZK	4.1I	EFI
Fairlane	1984-85	ZL	4.1I LEADED	EFI
Fairlane	1986-88	ZL	4.1I UNLEAD	EFI
Fairlane	1988-91	NA	3.9I	EFI

Volume 3 Release 15.0

Electrajjet - Ford Capri 1989-90 SA 1.6I SOHC EFI

File View Options Help

F1 F2 F3 F4

VEHICLE

M
A
E
C
D
F
H
H
J
K
K
L
M
M
N
P
P
S
S
S

Licence

Volume - Release	Status
Volume 1 Release 15.0	Unlicenced
Volume 2 Release 15.0	Unlicenced
Volume 3 Release 15.0	Unlicenced
Volume 4 Release 15.0	Unlicenced
Volume 5 Release 15.0	Unlicenced

Print Site Codes
Permanent
Subscription

EFI
EFI/TRA
EFI/TRA
Smiley EFI
I EFI
LEADED EFI
UNLEAD EFI
EFI

Help
Close

Enter User Details

Business Name*
[Insert your business name here]

Contact Person*
[Insert your name here]

Street State Postcode

Suburb, Town Country/Location

Phone* Fax

Mobile Phone Agent*

Email Address (if you have one) Licence Required*

Hardware
 T-100 T-400
 CSM Other

Print Sitecodes Cancel

1. Please click on the **Print Site Codes** button

2. Fill the License Form.

Please note: these areas must be filled

3. Click on this button then fax to us/your agent.